

EXTRA EXTRA EXTRA EXTRA EXTRA EXTRA EXTRA EXTRA EXTRA EXTRA

too being

Read all about it!

...ntend the material must be collected
Some students find their library cards in

...n, from the
...red, crump-
...ly into your
...being seen
...two images



Since the Media Officer is always in the

ing, or should I say pers-
Eds, and when their coffee
led-up screen! Finally, find
hardt, you have to fill in
fences paragraphs, using y

EXTRA EXTRA EXTRA EXTRA EXTRA EXTRA EXTRA EXTRA EXTRA EXTRA

EXTRA!

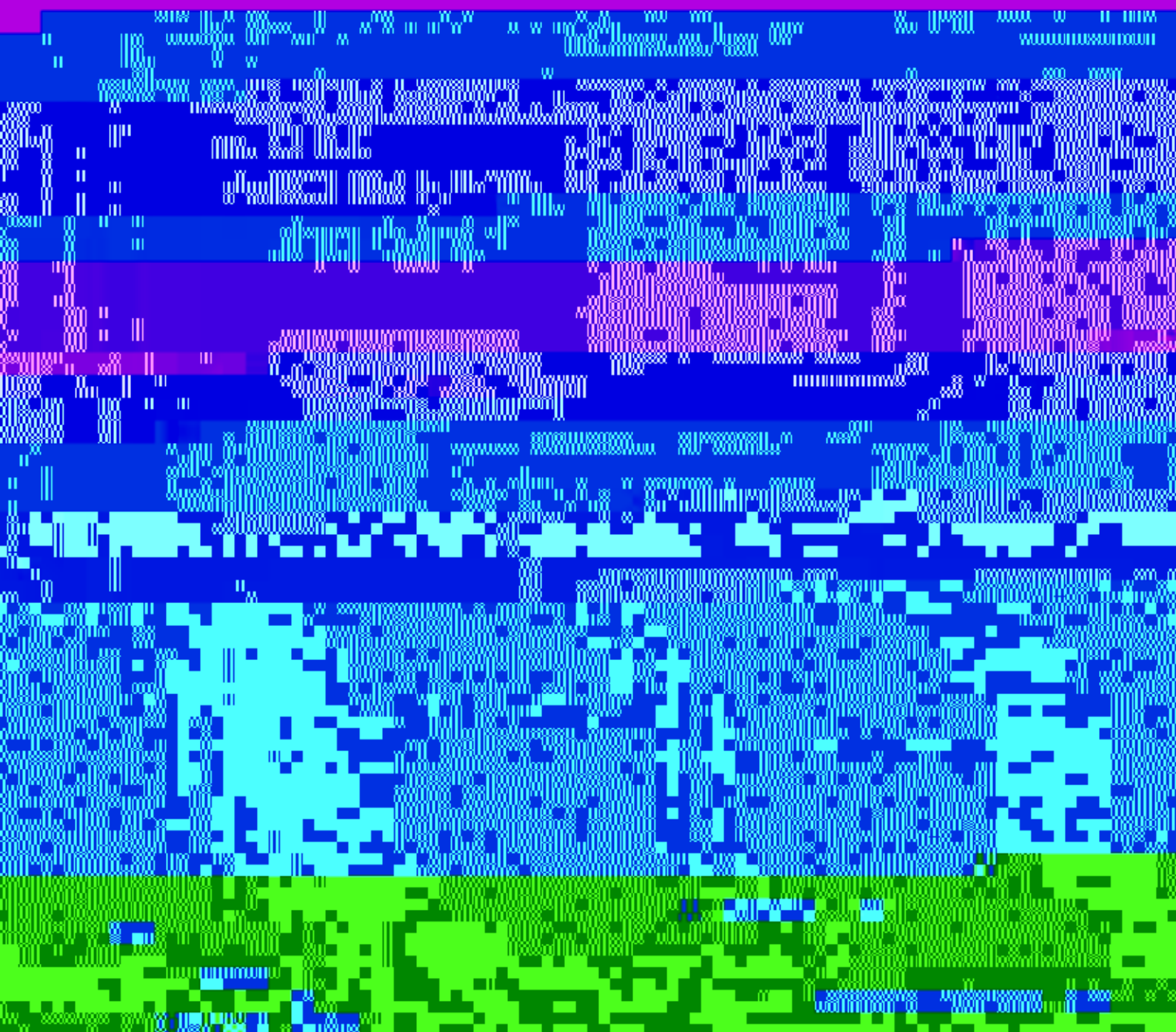
EXTRA!

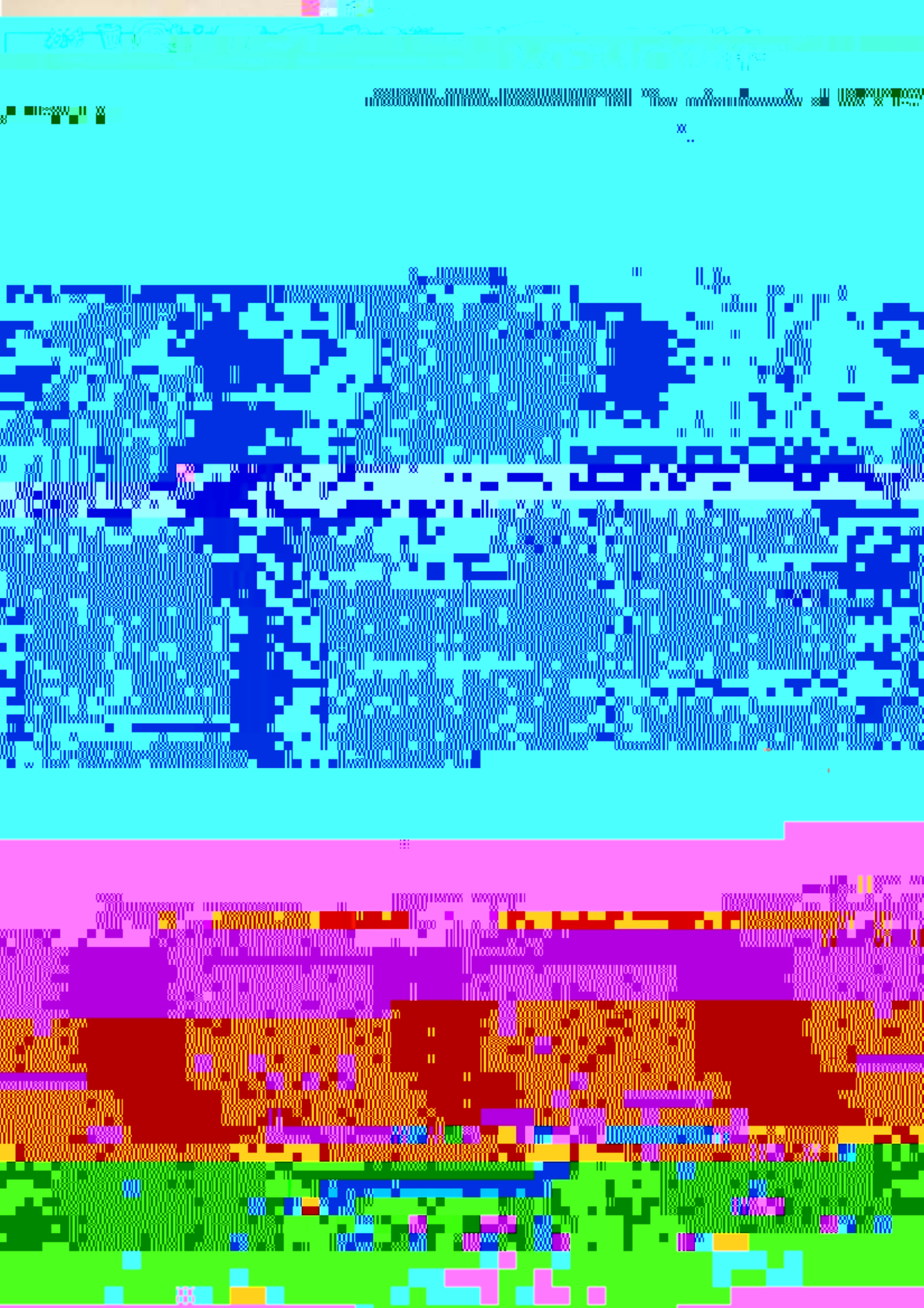
EXTRA EXTRA EXTRA EXTRA EXTRA EXTRA EXTRA EXTRA EXTRA EXTRA

EXTRA!

EXTRA!

EXTRA EXTRA EXTRA EXTRA EXTRA EXTRA EXTRA EXTRA EXTRA EXTRA







- In Victoria, the Education Minister has requested the withdrawal of the booklet "Young, Gay and Proud" ie. he is trying to prevent any sort of positive self-image of gay kids with gay adults.

• In

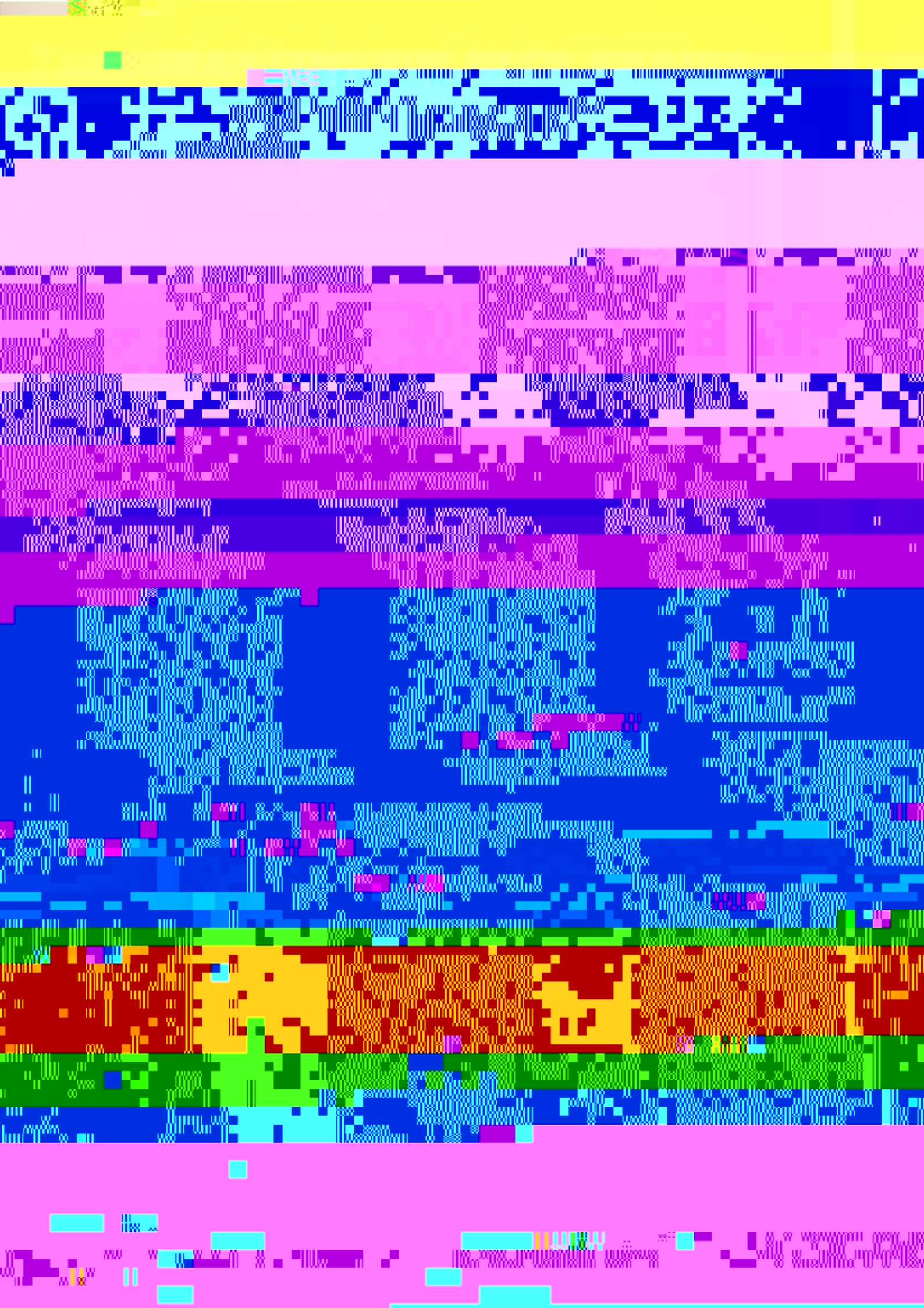
... heterosexual women don't understand how heterosexuality maintains male supremacy. They also don't want to understand feminism if they did then they would have to

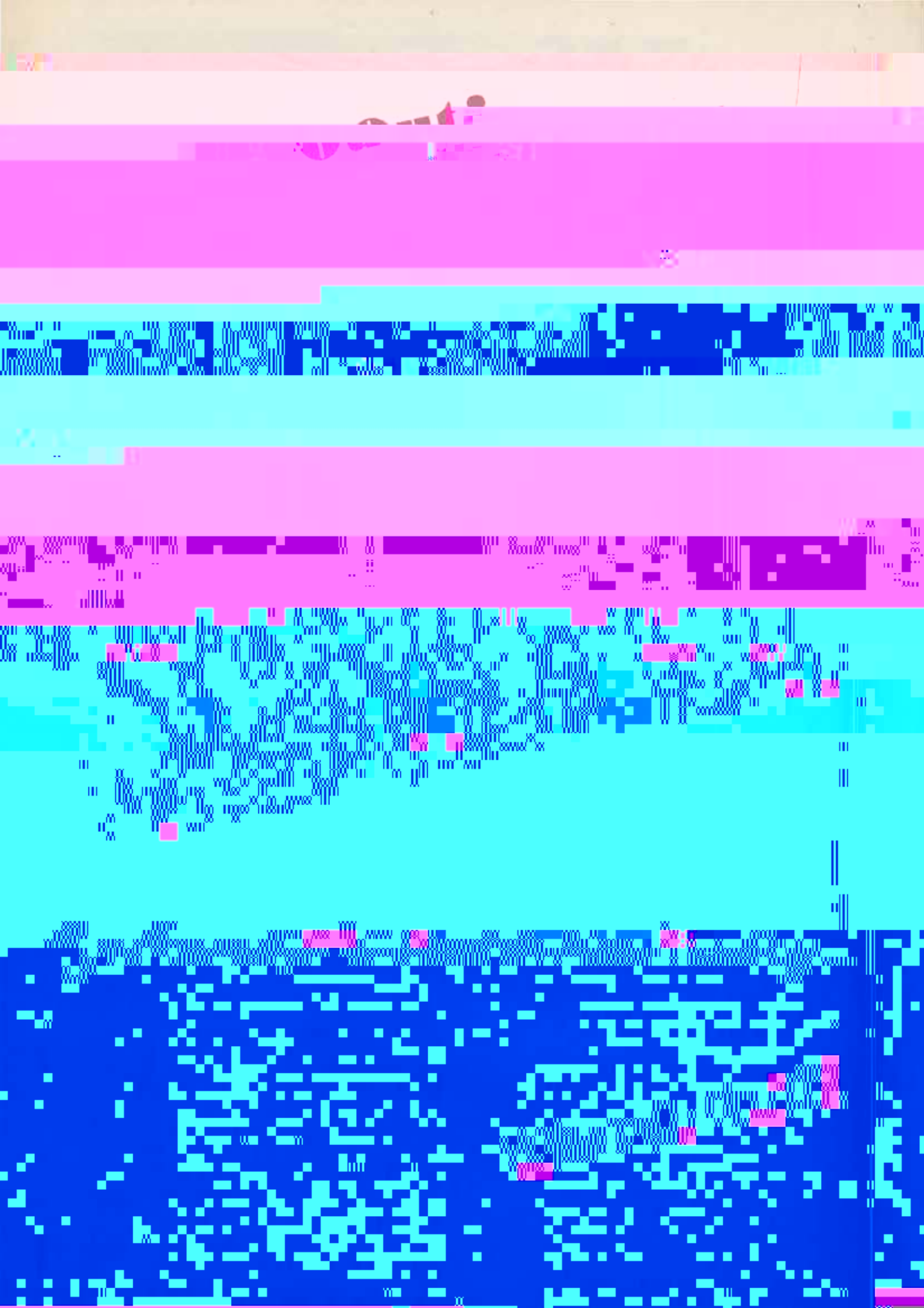
... leaving them little energy for anything

see also

...



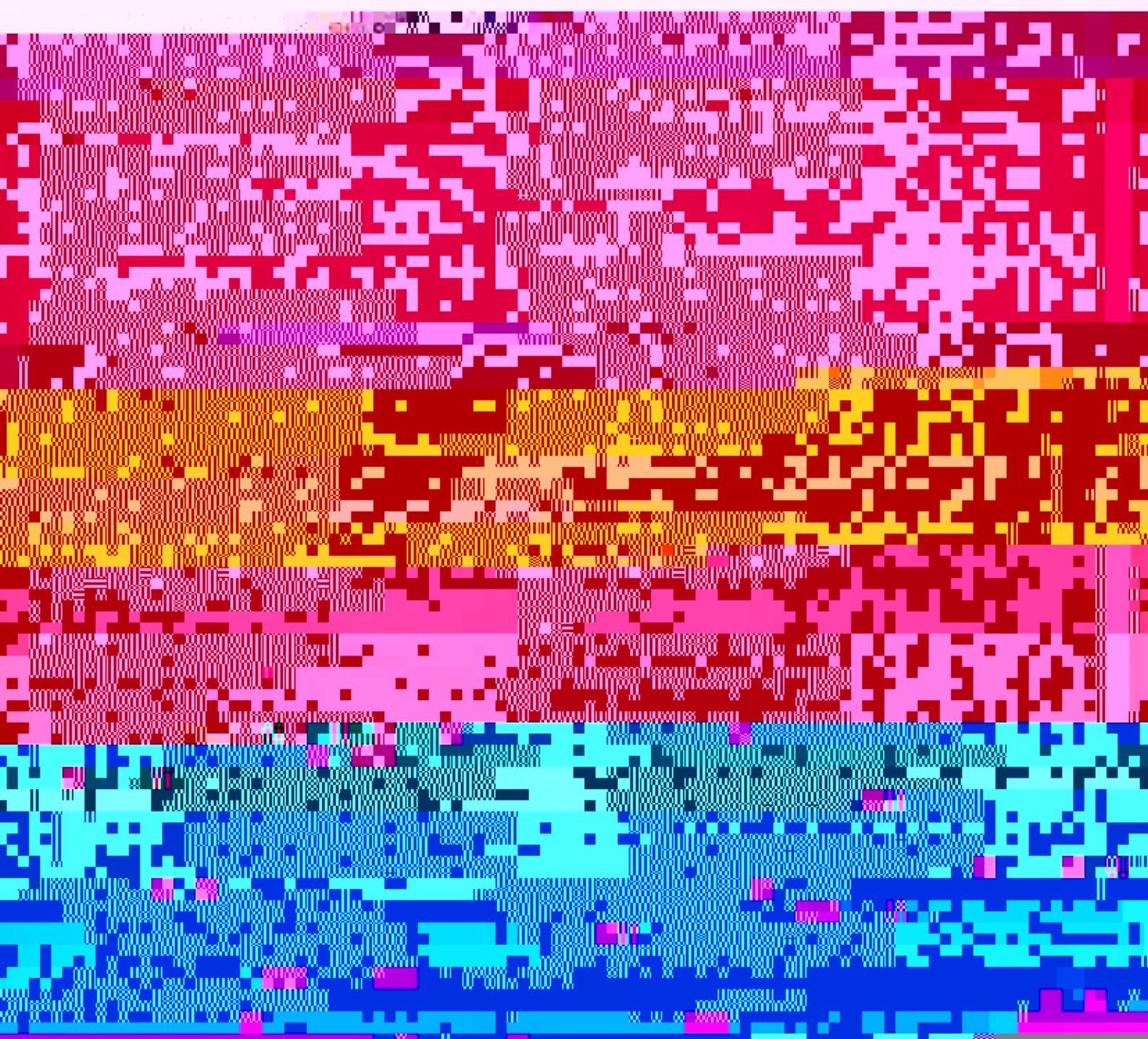




IF THE PEOPLE
WANTED DENNY RALY
THEY WOULD HAVE
VOTED FOR IT

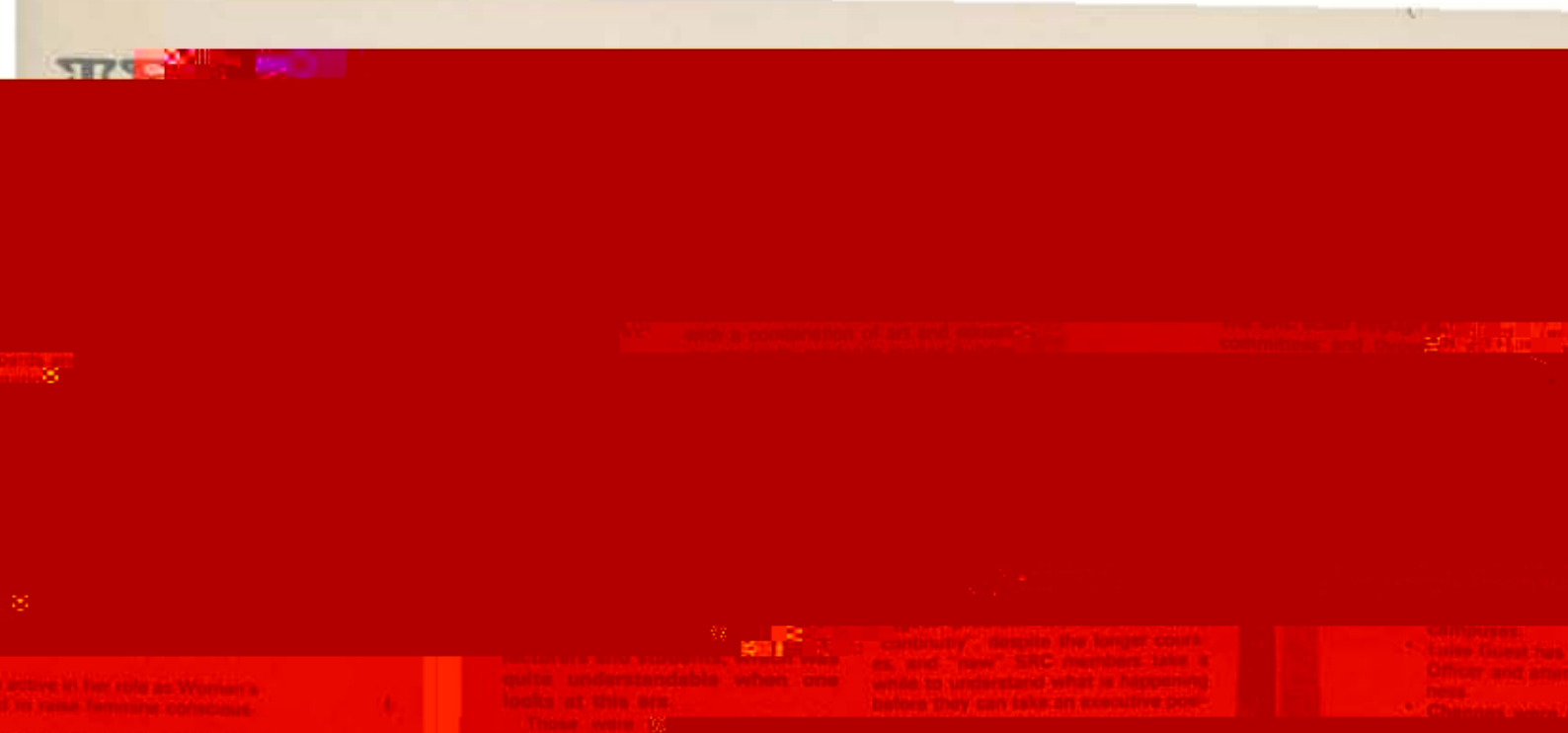


WHAT'S HAPPENED TO AUS



Photos of Mackee
political hacks
taken by the insides-
(cant you tell...)





active in her role as Women's
2 to raise female executives.

...and women's... was
quite understandable when one
looks at this era.

...continuity... despite the longer course
as and "new" SRC members take a
while to understand what is happening
before they can take an executive pos-

Company
Lynn Good has
Office and other
news
Changes...



Many substances have an anesthetic action and cause depression of the central nervous system. This is particularly dangerous, since you might not notice the effects, slow reflexes and

The drinking of alcohol after exposure to chlorinated hydrocarbons can make people very sick. The most toxic chlorinated hydrocarbon is carbon tetrachloride and

nitric acid are very dangerous since they burn the lungs and result in pulmonary edema (fluid in the lungs). Exposure to excessive nitric acid fumes can be fatal. Use of cleaning metals,

business leading to accidents, un-

should be used if it is

Always calculate the amount of

the types of problems an artist is likely to encounter in working with art materials. For a complete discussion of the effects of toxic substances on the body, I suggest the book *Is Dangerous To Your Health?*

Ph.D. and Susan Damm, M.D. (Vintage Press, paperback, New York, 1973), on which much of this discussion is based.

Solvents, acids and alkalis

Just how hazardous to health are art materials? The extent of damage to the body caused by toxic materials depends on the amount of material to which is exposed to, the

solvent has been shown to cause liver damage in mice. Methylene dichloride (dichloromethane) is very volatile and high concentrations can cause eye irritation and possibly pulmonary edema and pneumonia. In general try to replace chlorinated hydrocarbons with less toxic types of solvents. Use Wax, oil, resin, and grease solvent.

Aliphatic hydrocarbons tend to be fairly safe solvents if used with ventilation. They have a mild anesthetic effect and, if inhaled in large quantities, cause lung irritation and possibly chemical pneumonia. They are derived from the distillation of petroleum and the various products vary in boiling point. Starting with the most volatile (distillation) are petroleum

solvents that can also damage the lungs.

Painters use many different media, traditional ones like oil, tempera, casein, egg, gouache and fresco, and modern ones, mostly acrylic, but including media like ethyl silicate, vinyl acetate and other synthetics. In these media, the artist uses many different pigments, vehicle solvents (thinners, paint and varnish removers, etc.) varnishes and other materials.

Pigments: Most artists are aware of the dangers of red pigments and don't handle them in powder form because of the danger of inhaling the dust. Even

This is expanding

lead to fatigue, thus increasing the chances for mistakes and accidents. Some solvents — for example, benzol, toluene, and carbon tetrachloride — are known to be bladder

Use solvent for lacquer, chalk, wax and

Other solvents include acetone, a very

infrared spectra, but

TABLE 1 — TOXIC PIGMENTS

— Emerald green, cobalt violet, cadmium green, lead, iron, yellow lead, zinc white

acrylics and enamel (enyl or grain attached) — are reasonably safe.

Solvents fall into several classes with similar properties. If one member of a class of solvents

and several others. Turpentine is a skin irritant and dangerous to many people. Its vapors are irritating to the eyes, nose and throat upon prolonged exposure. Resulting symptoms in-

Particle sizes

particles in general they are not as

to be used in a spray, or in a spray

...expansion
...between and
...contain solvents like
...the case of some compressed
...cases either

...contain
...extreme
...breathing

The dust system should be made of materials
that won't be affected by the contaminants. For
example, if you are working with organic solvents,

should
dusts at velocity should
not be setting.

...and it has
...this is especially a problem

...Some of

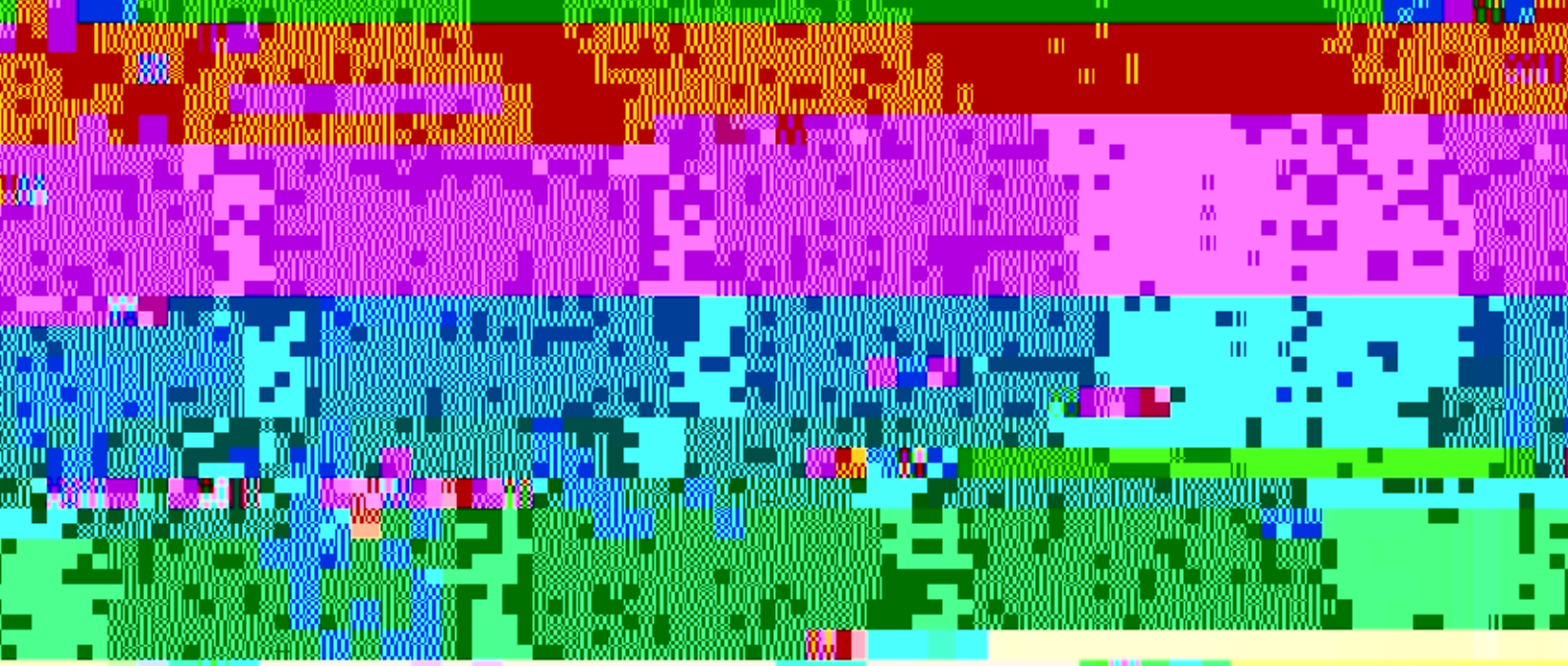
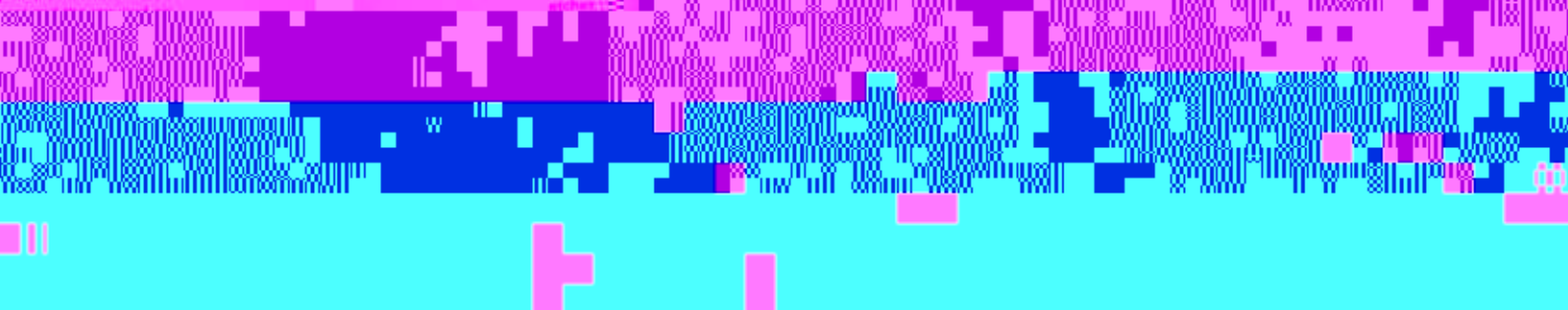
the dusts should be

...to keep an eye on

Color processing involves many of the
chemicals as the "white" in
processing. Developers also contain dye coup-

...to be

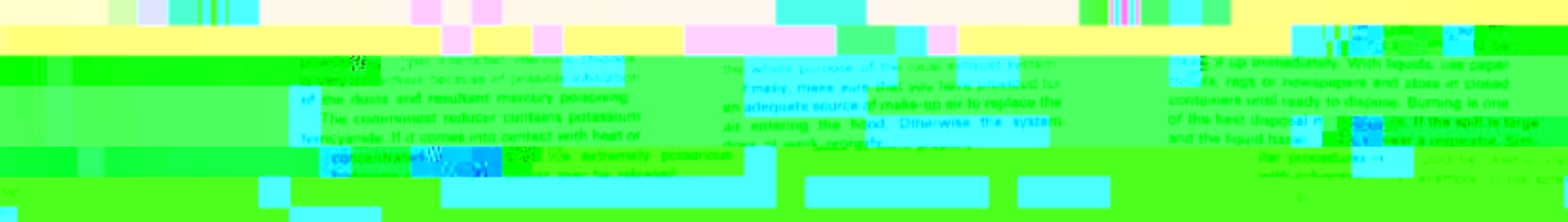
...to be
...to be
...to be



...because of possible
of the dusts and resultant mercury poisoning.
The compound reducer contains potassium
hydroxide. If it comes into contact with heat or

the whole purpose of the liquid developer system
...to make up as to replace the
...the system

...with liquids, use paper
...bags or newspapers and store in closed
containers until ready to dispose. Burning is one
of the best disposal methods. If the spill is large
and the liquid has



In cleaning so ducts never wrap. This will
pick up the dust so you inhale it. Instead use
vacuuming or an mopping/dust beater when there
is dust. For excessive cleaning ducts should be
vacuumed with industrial type vacuums.

Respirators should be regularly checked for
damage, cleaned and disinfected. One recom-
ended cleaning procedure follows:

- 1) Remove filters, cartridges or canisters.
- 2) Wash face piece and any tubing in soap and

water. Safety equipment that is chosen to
protect against a particular hazard should state that it
meets the standards of the
Standard Institute for Occupational Safety and Health
and Education, Inc. and the American
National Standards Institute.

ER-100

100

